

# iMediSync

AI-DRIVEN EARLY DETECTION THERAPEUTIC PLATFORM  
FOR OPTIMAL BRAIN HEALTH

FOR DISTRIBUTOR



# WHO is iMediSync

---

## What iMediSync is

Specializing in the early detection of neurological and mental disorders

## The Challenge

Early detection is the key for proper treatment; however, few indicators of neurological disorders have been discovered

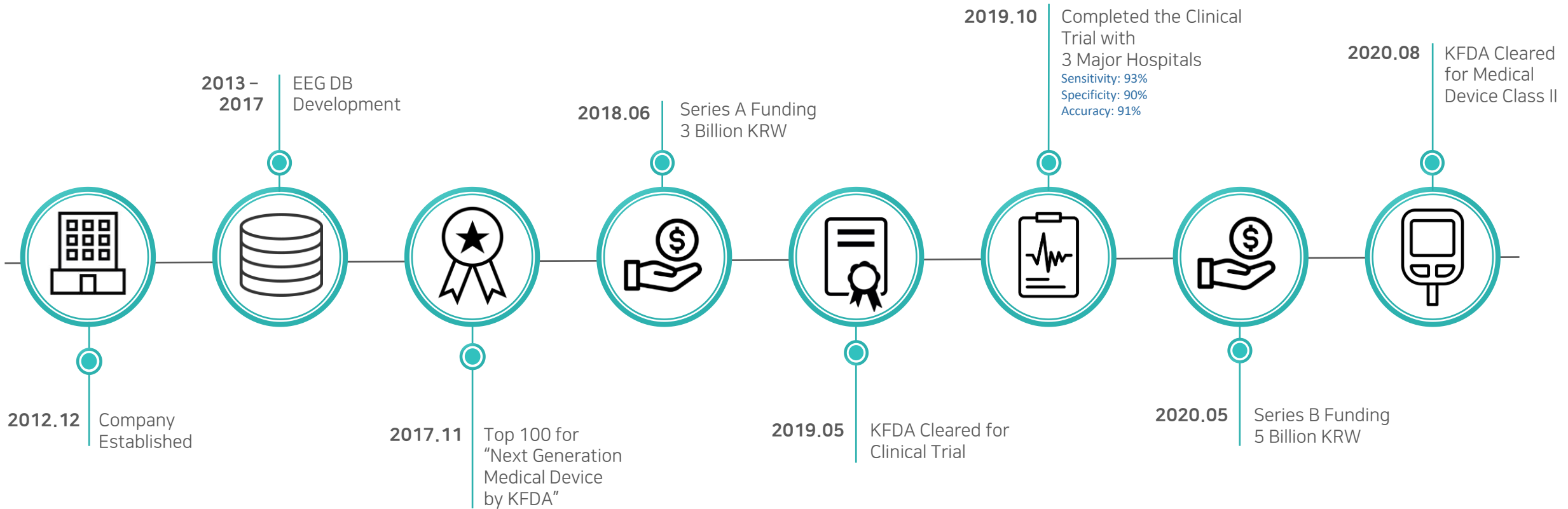
## How iMediSync Works

With advanced EEG (brainwaves) analytics, our AI driven cloud-based platform overcomes the challenge

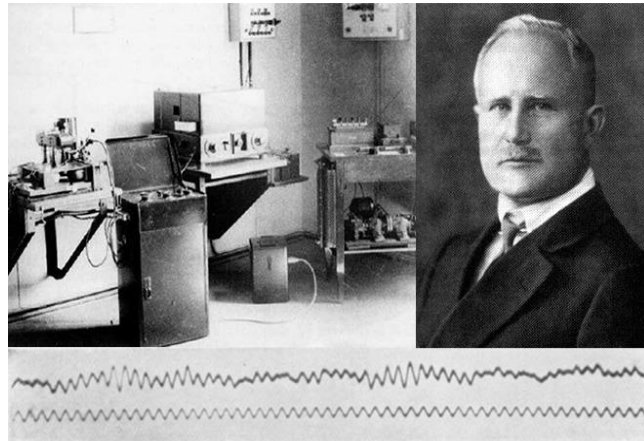


# ABOUT iMediSync

Specializing in Advanced EEG Analysis : Cloud-based, AI-driven, Norm-matched, Sex/Age-Specific

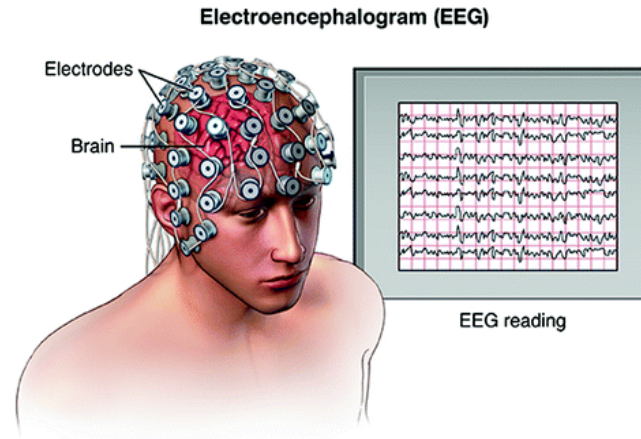


# EVOLUTION OF EEG DEVICE



## 1st EEG Device

First EEG Device, Hans Berger



## 2nd Generation EEG Device

Conventional EEG Device



## iSyncWave™

QEEG + Neuromodulation

# KEY PRODUCT - iSyncWave



**“LAUNCHING IN Q1, 2021”**

AI-driven EEG (brainwaves) Analysis  
Tele-mental Care  
Dry Sensor + LED Therapy  
Personalized Therapeutics  
Bluetooth Connectivity to Smartphone



## QEEG Guided Individualized Mental Healthcare Platform

# M

M - Series

A.I based amnesic Mild Cognitive Impairment

(aMCI) Screening Solution for Early Detection of Dementia

(MFDS(KFDA) Cleared)

# C

C - Series

Individual EEG Analysis Solution  
Automatic Noise Removal

Sensor and Source Level  
Norm Comparisons

# R

R - Series

Individual and Group EEG Analysis  
Solution Providing

Group Comparisons

# H

HRV

HRV (Heart Rate Variability)  
Analysis Solution  
for Clinical Support

(MFDS(KFDA) Cleared)



**Cloud Service**

Access anywhere, anytime



**Fast & Easy**

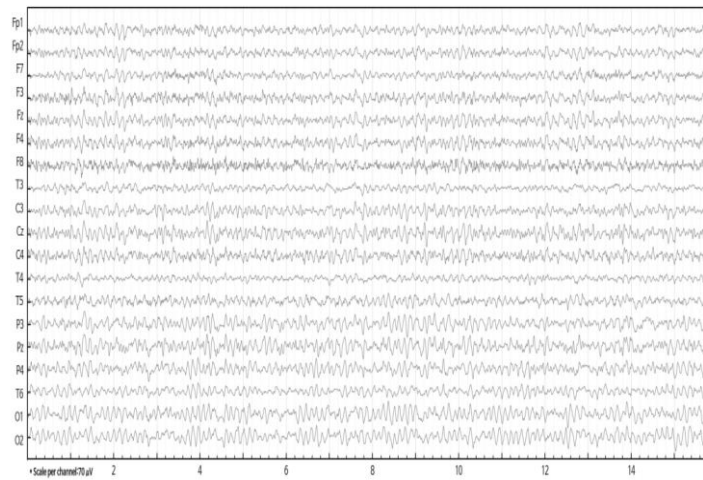
Upload, receive report in minutes



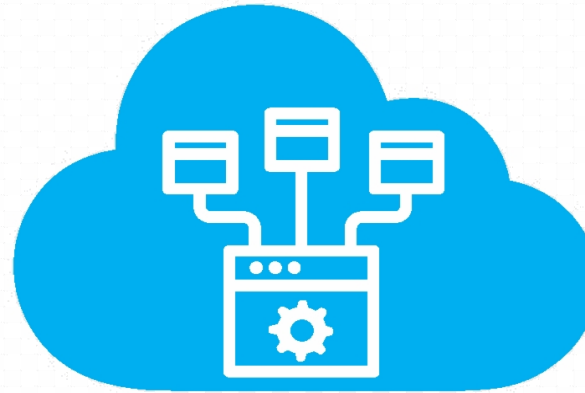
**Science-based**

Advanced analysis & provision of references

# HOW TO USE iSyncBrain

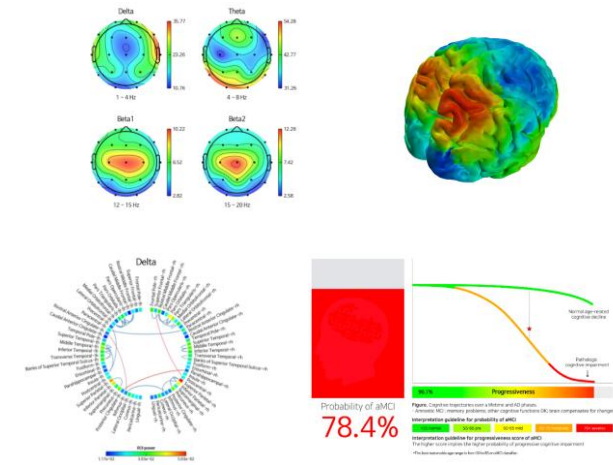


EEG Measure



Uploading to Cloud Platform

[isyncbrain.com](https://isyncbrain.com)



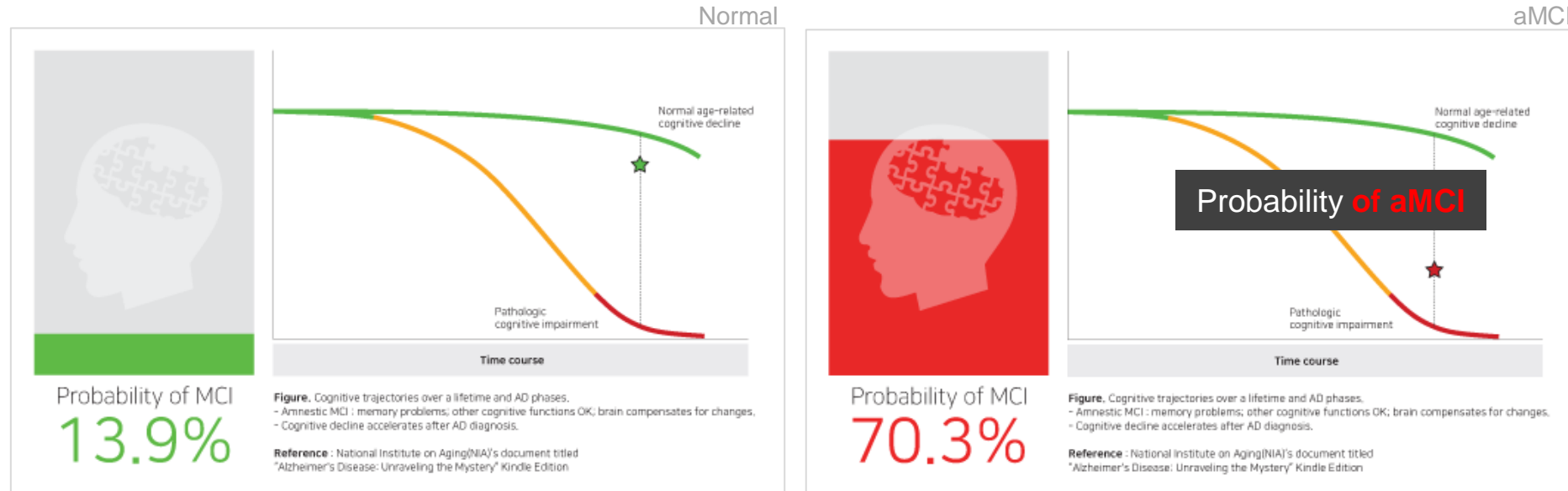
Providing Analytical Results



# iSyncBrain MCI Classifier

## AI Solution for Clinical Support

Pre-clinical Screening of aMCI (MFDS(KDFA) Cleared)



**0~50%** : Within Normal Limit | **50~60%** : SCD with Amyloid (+) or Preclinical Alzheimer's Disease | **60~70%** : MCI without Amyloid (+) | **70~85%** : MCI with Amyloid (+) or AD-MCI or Prodromal Stage of Alzheimer's Dementia | **85~100%** : Alzheimer's Dementia



# iSyncBrain - C

## QEEG Guided Individualized Mental Healthcare Platform

World's One and Only Age-Sex Specific Norm DB. (MFDS(KDFA) Cleared)



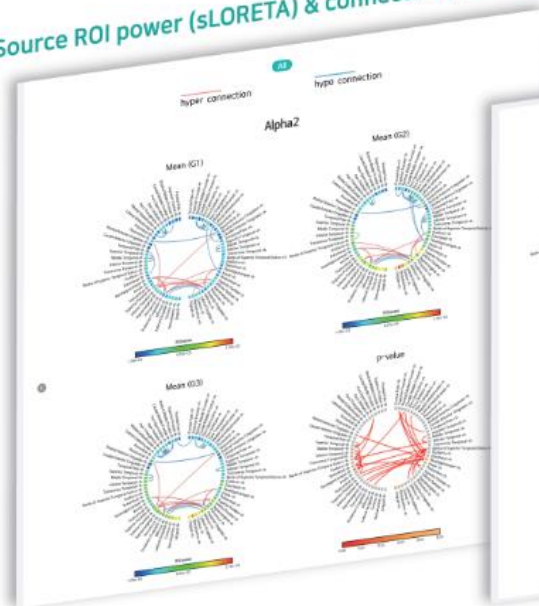
# iSyncBrain - R

## Maximized Usability of Brain Function Evaluation

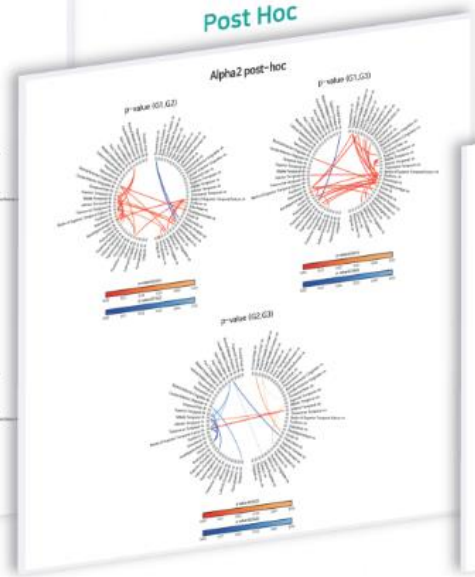
Optimized for Both Clinical and Research Purposes

Compatible with Various EEG Equipment through Amplifier Calibration

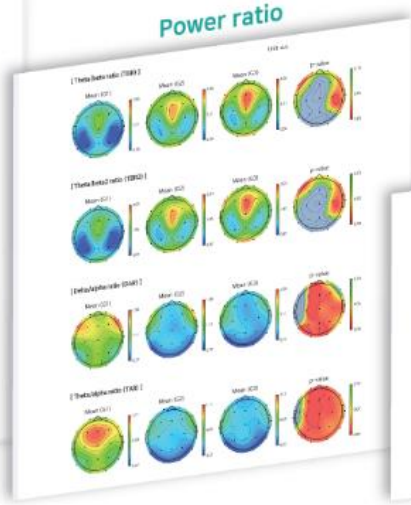
Source ROI power (sLORETA) & connectivity (iCoh)



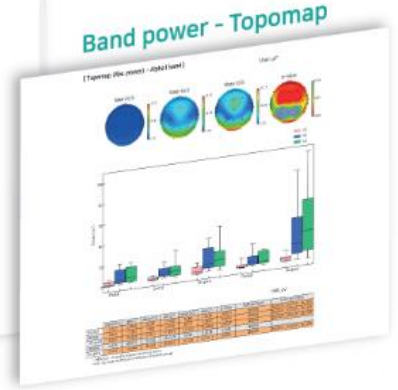
Post Hoc



Power ratio



Band power - Topomap



## HRV(Heart Rate Variability) Analysis Solutions

(MFDS(KDFA) Cleared)



# PRICING STRATEGY

## HARDWARE



LEASING

SALES

BUNDLES

## SOFTWARE

Holding point  
C H M R

1,290 P

Used point 260 P

Point is about to expire 0 P (0원)

## CURRENT

Pay Per Transaction



## FUTURE

Subscription Base



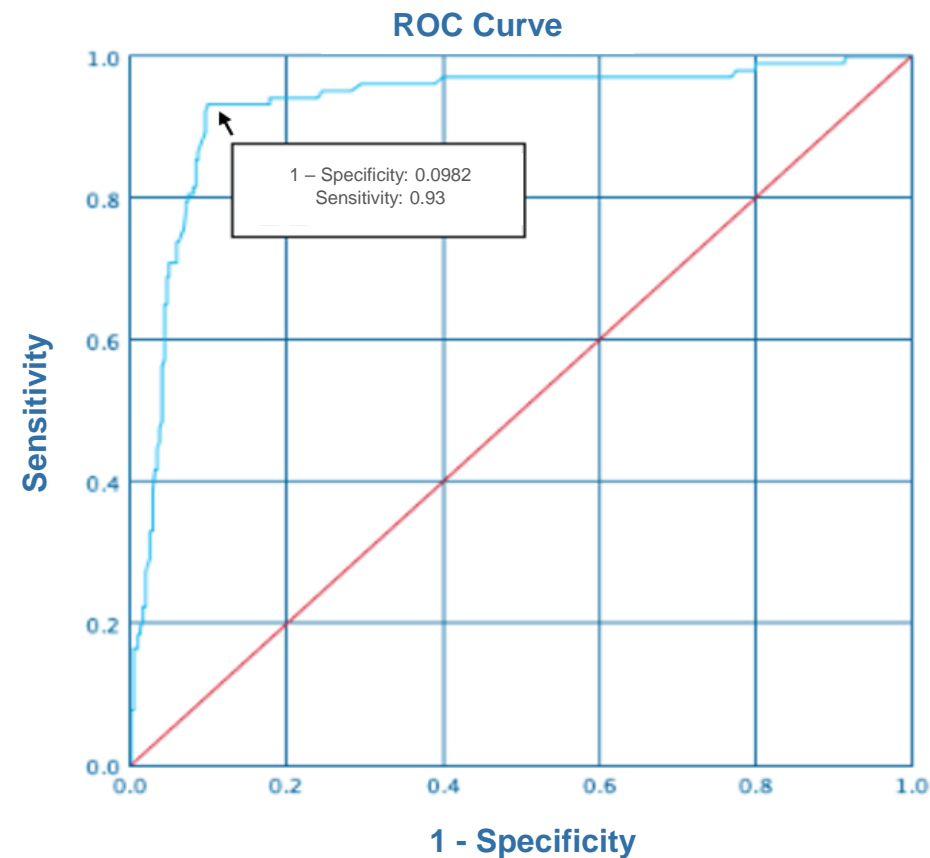
# RESULT OF VALIDATION CLINICAL TRIAL

## Multicenter Clinical Trial

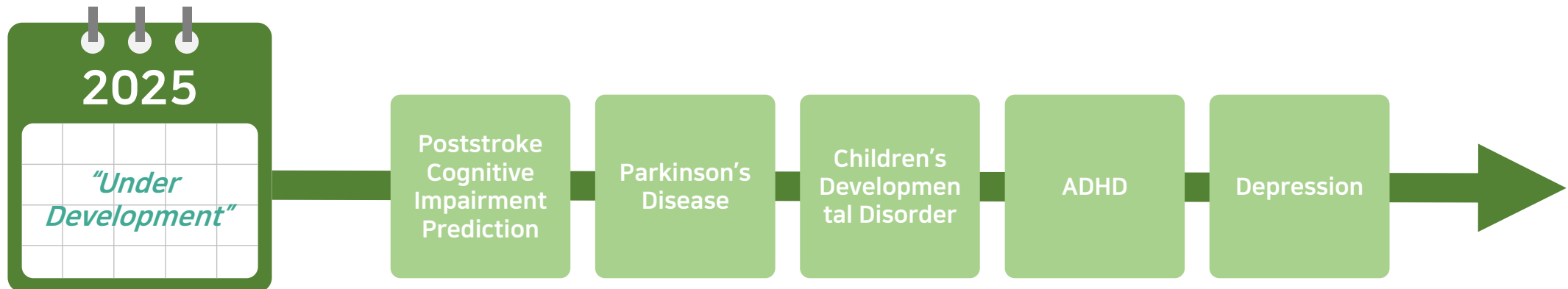
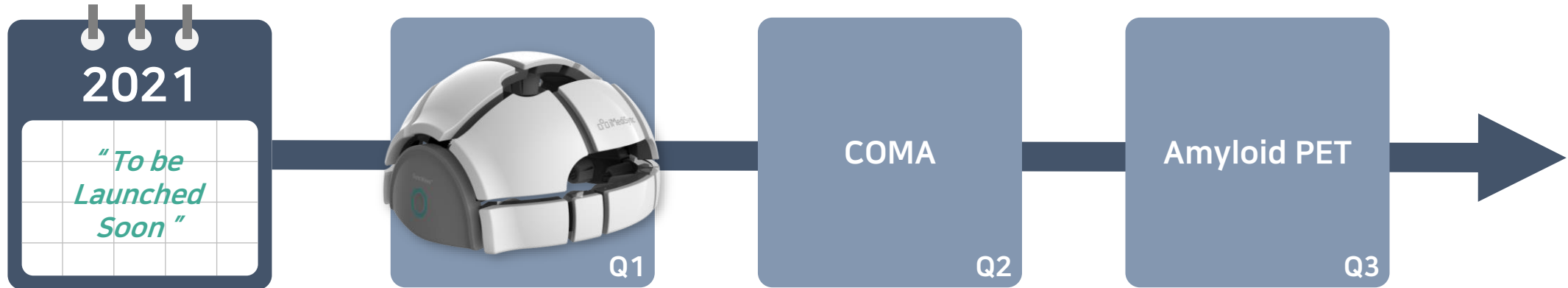


RESULTS	
Normal	326
aMCI	103
Total	429

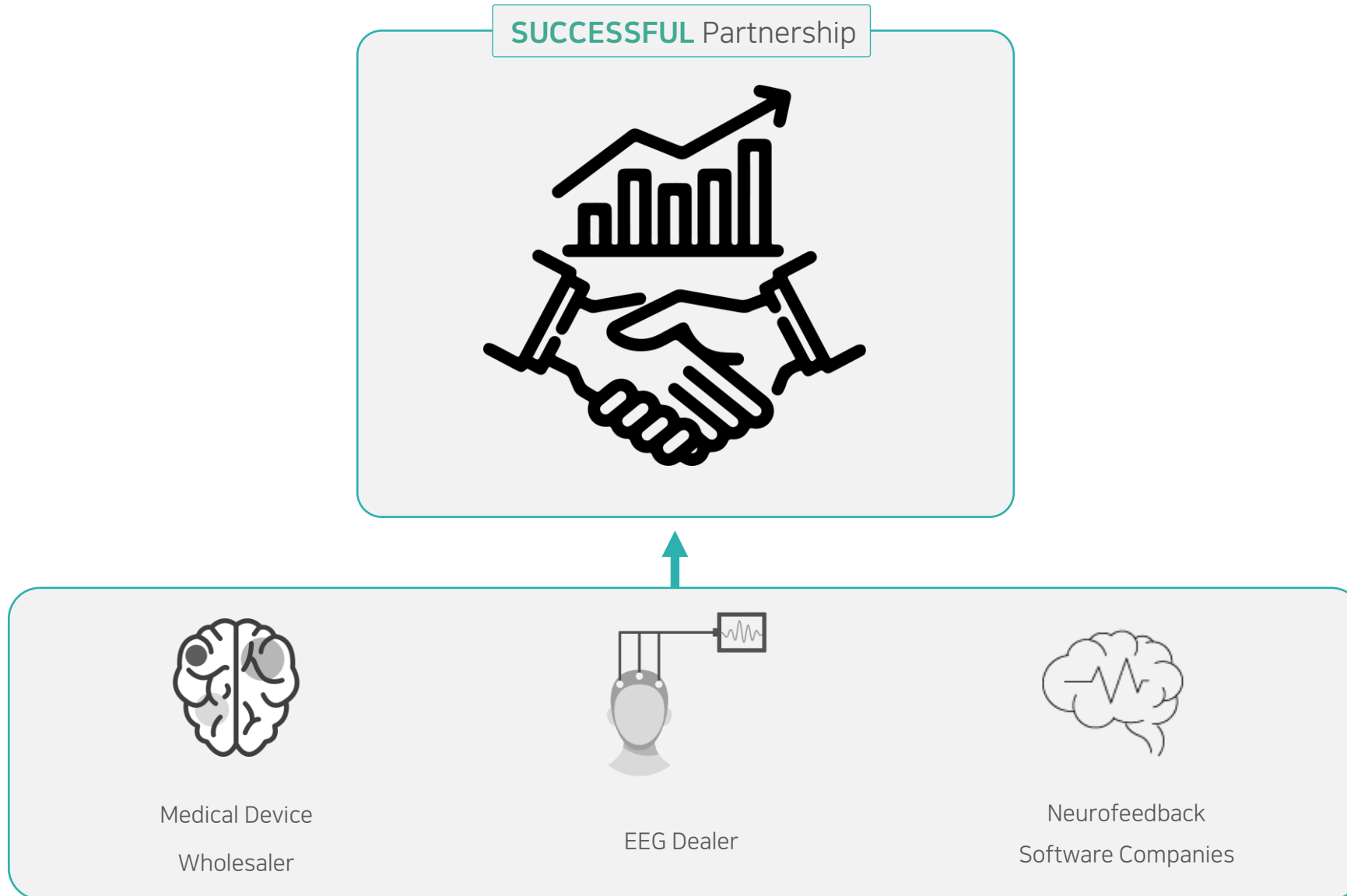
RESULTS	
Accuracy	0.91
Sensitivity	0.93
Specificity	0.90
AUC	0.93 (95% CI: 0.89 – 0.96)



# DEVELOPMENT ROADMAP



# OUR POTENTIAL PARTNERS





# LEADERSHIP TEAM



**Founder & CEO Seung Wan Kang** MD, Ph.D.

**Professor** Seoul National University  
**Head** National Standard Reference Data Center  
No.22, Korean QEEG Data Center, Seoul



**COO Jay Chung** Ph.D.

**Former CEO** Hanbul Bio Korea Co., Ltd  
**MBA** New York University, Masters in Health Management  
**PhD** Yonsei University, Doctoral Degree in Strategy and Organization



**COO Jay Chung** Ph.D.

**Former CFO & CMO** Namas Co., Ltd.  
**Former Director of Management Planning Dept.**  
KBS N Co., Ltd.  
**MBA** Hanyang University Business school

# ADVISORS

## Digital EEG Analysis Solution



**Jun sik Kim**  
PhD



**Dong Suck Han**  
MD

## Biomarker for Dementia



**Sang Yoon Kim**  
MD PhD



**Yong Chul Yoon**  
MD PhD

## Global Partner & Consultant



**Jay Gunkleman**  
Global No.1 QEEG  
Specialist



**Jim Cahill**  
Principal  
Alaya Neuro Ventures



**Dave Berkus**  
President  
Berkus Tech  
Ventures

# OUR TEAM

---



# CONTACT INFORMATION

---



**Jay Chung** Ph.D.

---

**Chief Operating Officer**  
Email: [jchung@imedisync.com](mailto:jchung@imedisync.com)



**Juan Alberto Aguayo**

---

**Administrative Manager**  
Sales & Marketing  
Email: [juanalb@imedisync.com](mailto:juanalb@imedisync.com)



**Jane Han**

---

**Administrative Manager**  
Sales & Marketing  
Email: [janehan@imedisync.com](mailto:janehan@imedisync.com)

**THANK YOU**